

# Teanaway Valley

Orienteering map 1:15,000 scale 5 meter contour interval

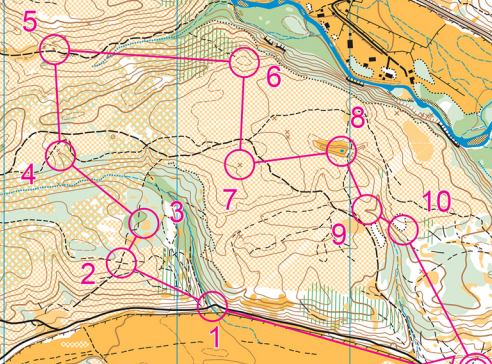
© 2015 Cascade Orienteering Club. Do not copy without authorization.

This map was produced with assistance from  
Orienteering USA  
www.orientingusa.org

CASCADE  
ORIENTEERING  
CLUB  
P.O. Box 31375  
Seattle, WA 98103  
Website: www.cascadeoc.org

scale in meters  
0 100 200 300 400 500

Teanaway Forks					
Web Sample Course					
Adv.	Beginner	3.6 km			
▷					Start:
1	101	⚡			Bridge
2	102	⚡	⚡	✕	Path crossing
3	103	⋯		⊙	W part of vegetation boundary
4	104	⌒		⌒	Upper part of reentrant
5	105	•			Knoll
6	106	○			Hill
7	107	○			Special item
8	108	⊠			Thicket
9	109	⌒		⌒	Upper part of reentrant
10	110	⊙		⊙	S part of clearing
⊙		460 m			Navigate 460 m to finish



This map is limited to personal, non-commercial use. If you wish to use this map for a group activity or to resell this map for any purpose, please obtain permission from Cascade Orienteering Club (info@cascadeoc.org). Please follow all applicable land use rules and stay out of all private property and other forbidden areas indicated on this map. The map is current based on the version date on the map.

photogrammetry: Ivar Helgesen  
fieldwork and cartography: Georgy Kuntzevich, Aug-Sep 1997  
minor updates and layout: Eric Bone, 4/2001, 9/2010, 5/2015  
Mark Donnie, 4/2009

## Legend

Overview map			
	paved road		contour, index contour
	improved unpaved road		form line, slope tag
	unpaved road		earth bank, dry ditch
	old road, footpath		roadstock, small knoll
	very old road, small path		small depression, pit
	indistinct old road or path		cliff: passable, impassable
	fence: crossable, ruined		boulder: small, large, cluster
	power line		bare rock, stony ground
	logging debris piles		pond, river
	log structure or heavy equipment		stream, seasonal stream
	small building or shelter, ruin		spring, narrow marsh
	marsh, seasonal or indistinct marsh		forest of good runnability
	vegetation: slow run, difficult to run, tight		undergrowth or slash: slow run, difficult to run
	open land, rough open land		land with scattered trees: open, rough open
	open sandy ground or area of river gravel		distinct vegetation boundary
	rough open land with scattered bushes		